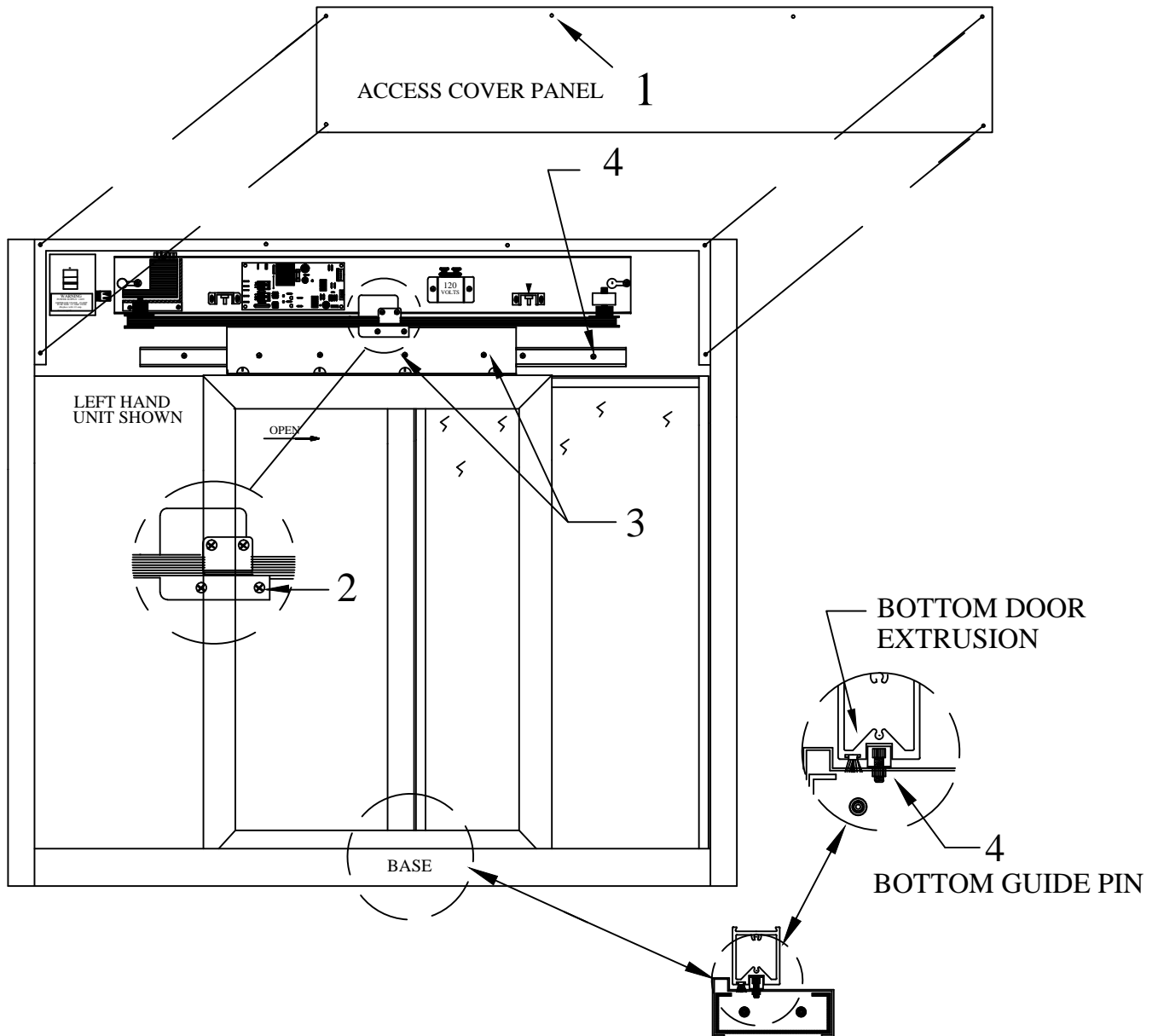


ELECTRIC SINGLE SLIDER DOOR GUIDE REPLACEMENT



TOOLS NEEDED

5/16" Wrench / Nut Driver

3/8" Wrench

5/32" Allen head wrench

Small pliers or vise grips

1. Remove the screws from the front access cover.
2. Remove the 2 screws holding flag bracket to door bracket.
3. Remove the screws connecting door bracket to slide rail.
(Remove door and set aside)
4. Remove old door guide (Part#1017) and replace with new one.
(The bottom nutzert may also need replacing.)
5. Replace door in reverse order it was removed.

NOTE: THIS DRAWING EMBODIES A CONFIDENTIAL PROPRIETARY DESIGN ORIGINATED AND OWED BY QUIKSERV CORP., AND IS SUBMITTED UNDER A CONFIDENTIAL RELATIONSHIP. ALL PATENT, MANUFACTURING, SALE RIGHTS REGARDING THE SAME ARE RESERVED EXCEPT TO THE EXTENT RIGHTS ARE EXPRESSLY GRANTED TO OTHERS. THE RECIPIENT AGREES BY ACCEPTING THESE DRAWINGS NOT TO SUPPLY OR DISCLOSE ANY INFORMATION REGARDING THEM TO ANY UNAUTHORIZED PERSON.

Quikserv Corp.

www.quikserv.com
1-800-388-8307

Electric Single Slider Door Guide Replacement

Submitted By:

BRIAN COBLE

DATE:

11/10/2014

Sheet:

ESS-DG